



AFROTC Det 847 SWAW Host Proposal Fall 2024

*Train/Inspire and develop high quality leaders ready to serve the world's greatest
Air & Space Forces!*



Overview



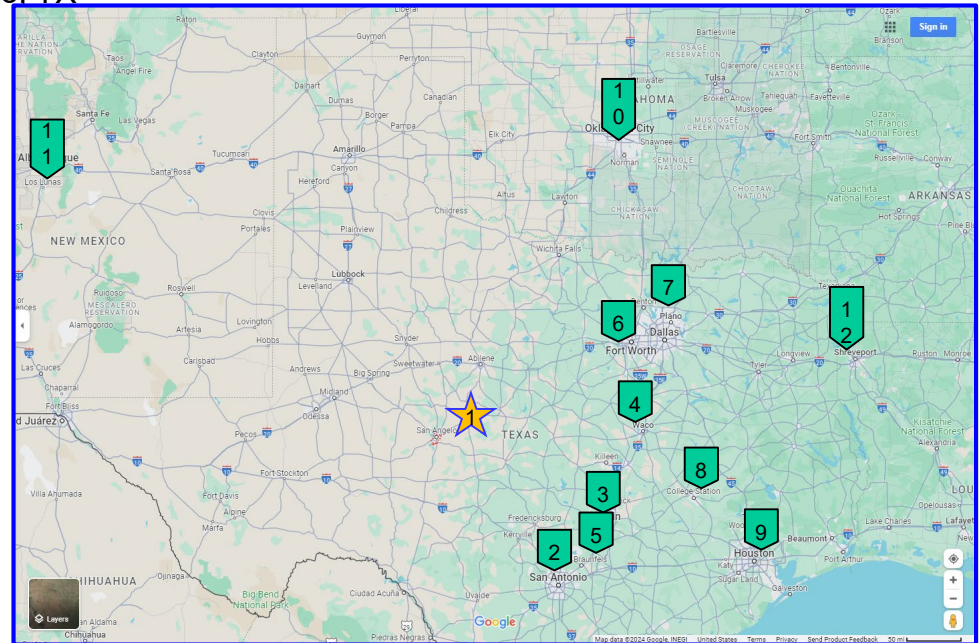
- Regional Detachment Proximity
- Location
- Climate
- Facilities
- Equipment
- Det Experience: Expeditionary Field Training Exercise (FTX)
- Questions



Regional Detachment Proximity



1. Host – Det 847 – **Angelo State University**, San Angelo, TX
 1. 4 miles from Goodfellow AFB
2. Det 842 – **University of Texas San Antonio**, San Antonio, TX
 1. 200 miles/3.5 hrs
3. Det 825 – **University of Texas**, Austin, TX
 1. 204 miles/3.5 hrs
4. Det 810 – **Baylor University**, Waco, TX
 1. 211 miles/3.5 hrs
5. Det 840 – **Texas State University**, San Marcos, TX
 1. 217 miles/4 hrs
6. Det 845 – **Texas Christian University**, Fort Worth, TX
 1. 228 miles/4 hrs
7. Det 835 – **University of North Texas**, Denton, TX
 1. 262 miles/5 hrs
8. Det 805 – **Texas A&M**, College Station, TX
 1. 291 miles/6 hrs
9. Det 003 – **University of Houston**, Houston, TX
 1. 366 miles/7 hrs
10. Det 675 – **University of Oklahoma**, Norman, OK
 1. 369 miles/7 hrs
11. Det 505 – **New Mexico State University**, Las Cruces, NM
 1. 433 miles/8.5 hrs
12. Det 305 – **Louisiana State University Shreveport**, Shreveport, LA
 1. 630 miles/11 hrs





Location

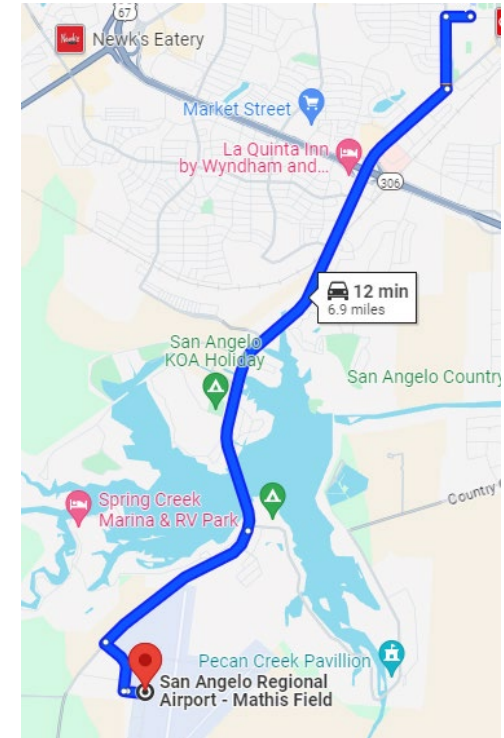


- Angelo State University - San Angelo, Texas
- Campus is located at in the heart of West Texas, and is only 4 miles from Goodfellow AFB & 5 miles from San Angelo State Park, providing unique arid/desert training opportunities





Location



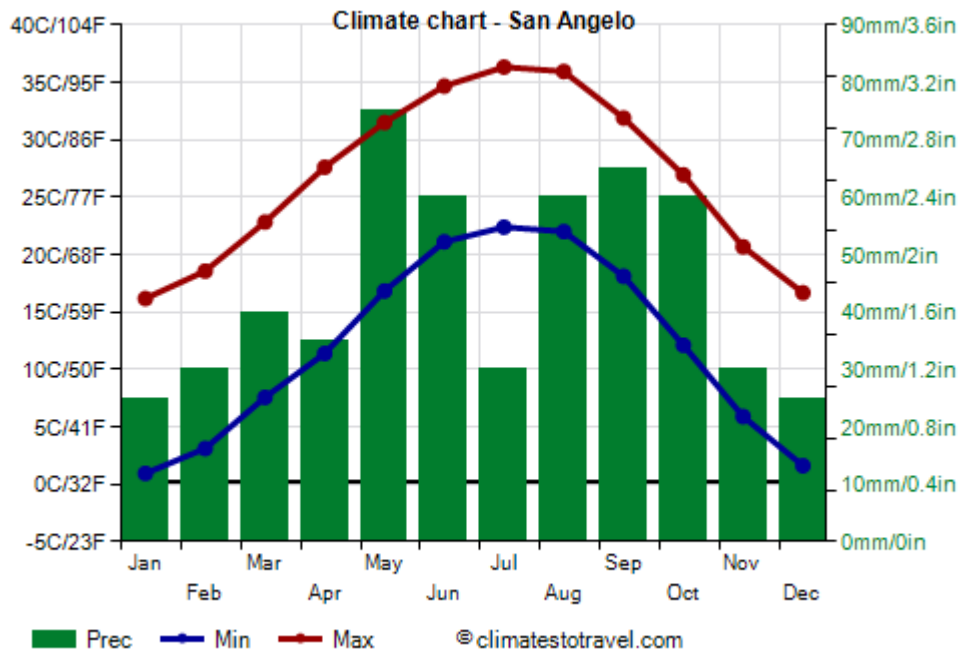
- The Mathis Field & Regional Airport is ~12 mins away
- May host cadets overnight at University, Goodfellow AFB, or State Park with extensive wilderness space should camping arrangements be required
- Hotels in San Angelo range from \$85-100 per night



Climate



- San Angelo has an arid/desert climate with warm, dry windy summers and cool to cold winters with minimal snowfall and occasional hail.
- While precipitation is limited, it tends to be heaviest in the spring months





Facilities



University Center for Human Performance - Gymnasium

- Gym Available: Mon-Thurs 0700-2300, Fri-Sun 1200-0800, or by reservation
- Climbing Gym: Sun-Thurs 1500-2100, Sat 1500-2000



University Aquatics Center – 25m pool length

- Pool Available: Daily 1200-1900, or by reservation





Facilities



University Intramural Fields

- Complex Available: Daily 1500-1900 (various hours), or by reservation



University Athletics Field

- Fields Available: upon coordination with University Athletics Department





Facilities



- ASU Lake House

- Available: March – November; Wednesdays, Saturdays & Sundays from 1300 to sundown.

- **Amenities:**

- Picnic tables
- Shaded pavilion
- Bathroom facilities
- Two boat launches
- Lake access
 - Swim at your own risk
 - No lifeguard on duty
 - Diving prohibited

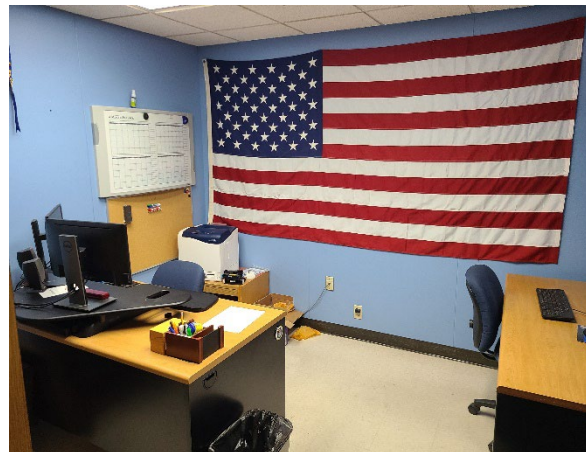




Facilities



- Det hosts a classroom, and can coordinate for additional classroom space with University to facilitate mission brief/debrief requirements
- Additionally, Cadet Cadre office space and Det lounge available





Off-Campus Facilities – Goodfellow AFB



- 17th Training Wing
 - Intelligence Technical Training Schoolhouses
 - Vance Deployment Center
 - GAFB Expeditionary Training Site
 - Mathis Fitness Center



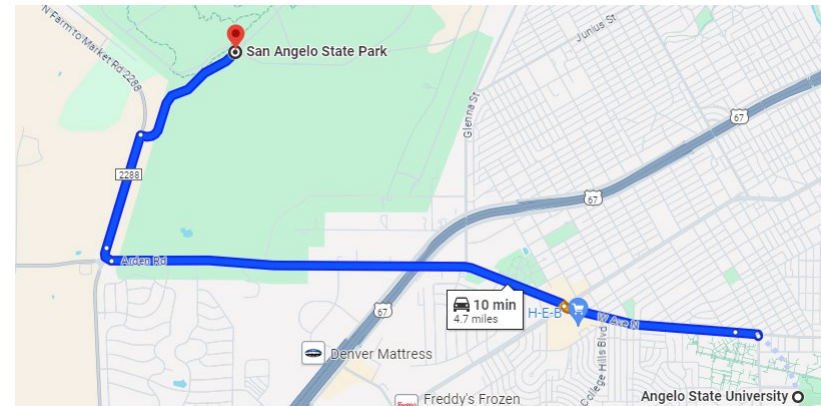


Off-Campus Facilities – San Angelo State Park



Items of Note:

- Hours of Operation:
 - 0830 – 1630 Daily
- Busiest in the Spring & Summer
- Over 50 miles of multi-use trails
- Camping Sites for additional lodging opportunities
- ~5 miles from campus



TRAIL	DISTANCE	TRAIL	DISTANCE
ROADRUNNER TRAIL	3.0 mi. (round trip)	TRAILHEAD TO TRAILHEAD ROUTE	5.3 mi. (one-way)
POTT'S CREEK TRAIL SYSTEM	1.6 mi. (one-way)	SHADY TRAIL	0.5 mi. (one-way)
RED DAM LOOP	0.8 mi. (one-way)	DINOSAUR TRAIL SYSTEM	2.2 mi. (one-way)
PLAYGROUND TRAIL	2.0 mi. (one-way)	RIVER BEND TRAIL SYSTEM	2.9 mi. (one-way)
WINDING SNAKE TRAIL	1.4 mi. (one-way)	FLINTSTONE TRAIL SYSTEM	1.9 mi. (one-way)
ROLLER COASTER TRAIL	1.0 mi. (one-way)	NORTH SCENIC LOOP	0.4 mi. (one-way)
TURKEY CREEK TRAILS	2.0 mi. (one-way)	NORTH AND SOUTH SLICK ROCK TRAILS	0.5 mi. (one-way)



Equipment



On-Hand

- Large Timer Clock
- Rucks
- Mock Rifles
- MOLLE Vests
- Radios
- Kettle Bells

Available from Goodfellow AFB

- Alaska Tents
- Paintball Equipment
- TCCC Equipment
- Transportation



Det Experience: Expeditionary Field Training Exercise (FTX)



- Det 847 partnering with Goodfellow AFB every year since 2013
- Event integrates installation Security Forces, Intelligence, and Logistics capabilities to simulate hostile environment and facilitate real-time leadership and decision making scenarios
- ~30 participants from 5 AF units in 2024 (SFS, 2x Intel TRS, JAG, Safety)





Questions



- Cadre Lead
 - Major Evan Walters –Recruiting/Education Officer
 - ewalters@angelo.edu
 - Office: (325) 942-2036 ext!6537
- Cadet Lead
 - C/ Wesley Wright

